

What YOU Can Do to Protect Your Source of Drinking Water



Yard Maintenance

DO

- Apply chemicals only as directed. More is not always better!
- Cultivate plants which discourage pests. This reduces pesticide usage.
- Leave lawn clippings on lawn or compost them.
- Pull weeds by hand.
- Clean up after pets.

DON'T

- X Overapply fertilizers, herbicides, or pesticides.
- X Use gas powered leaf blowers or weed wackers.



Automotive

DO

- Recycle used oil & antifreeze at service stations.
- Have automotive fluid leaks fixed.
- Clean up spills immediately.
- Drive only when necessary.

DON'T

- X Pour used oil, antifreeze, or other chemicals on the ground or down a storm drain.

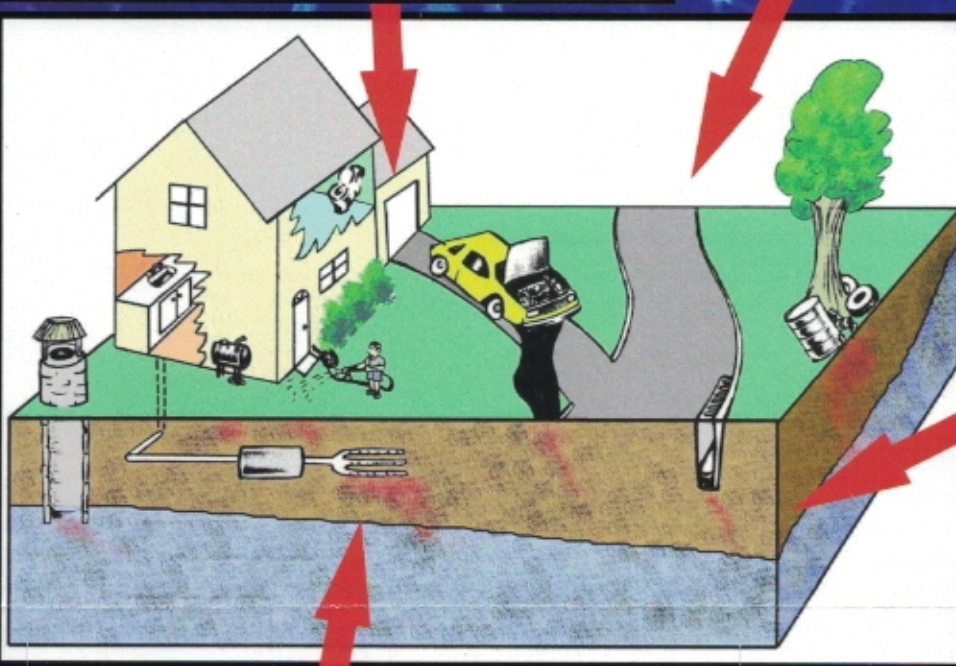
Storm Drains

DO

- Take unwanted chemicals to hazardous waste collection sites.

DON'T

- X Pour chemicals into storm drains or drainage ditches.



Plumbing/Septic Systems

DO

- Have your septic tank inspected annually.
- Have your septic tank pumped at LEAST every five years.
- Use phosphate free detergents.
- Take unwanted chemicals to hazardous waste collection sites.

DON'T

- X Pour chemicals down the drain.
- X Use toilets as trash cans.
- X Use septic system additives or "cleaners."

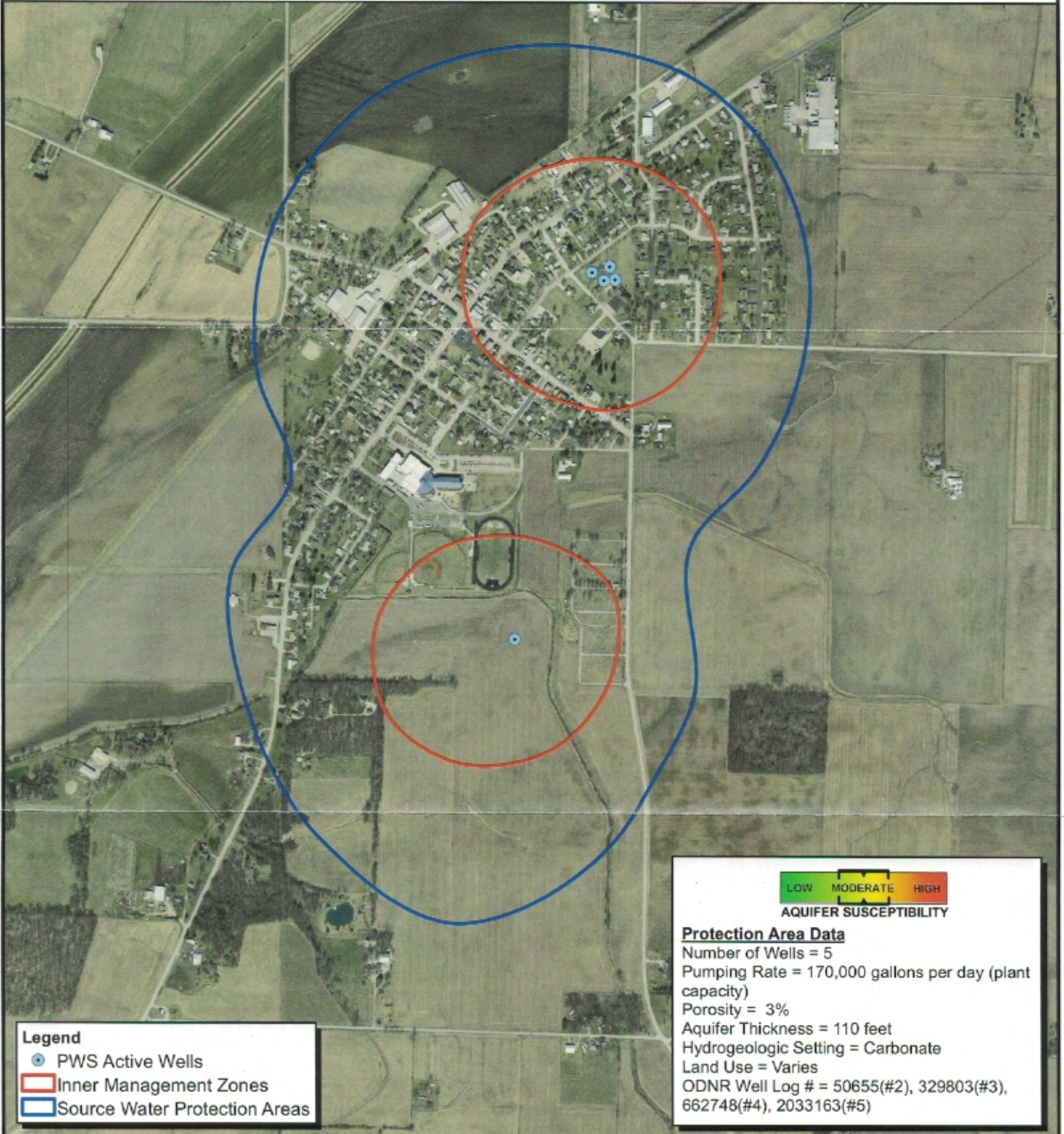


Additional Water Protection Ideas

- If you have a fuel oil tank, make sure it is not leaking. You can also install a concrete bermed pad under the tank to catch any accidental spills or leaks.
- Hire someone to seal properly all unused water wells on your property.
- Write or call your elected representatives about your interest in protecting water resources.

For More Information about Source Water Protection, call:
The Ohio Environmental Protection Agency/Division of Drinking and Ground Waters (614) 644-2752

Figure 1. Drinking Water Source Protection Area



Legend
● PWS Active Wells
■ Inner Management Zones
■ Source Water Protection Areas

LOW MODERATE HIGH
AQUIFER SUSCEPTIBILITY

Protection Area Data
Number of Wells = 5
Pumping Rate = 170,000 gallons per day (plant capacity)
Porosity = 3%
Aquifer Thickness = 110 feet
Hydrogeologic Setting = Carbonate
Land Use = Varies
ODNR Well Log # = 50655(#2), 329803(#3), 662748(#4), 2033163(#5)